



OBJECT PROJECTS, LLP
4900 Shattuck Avenue, #3695
Oakland, CA 94609

Sarah Hirschman, RA (917) 916-1865
Ann Worth, RA (617) 416-8266
info@object-projects.com

OCEANSIDE THEATRE COMPANY
BROOKS THEATER RENOVATION
217-219 N. COAST HIGHWAY, OCEANSIDE, CA 92054

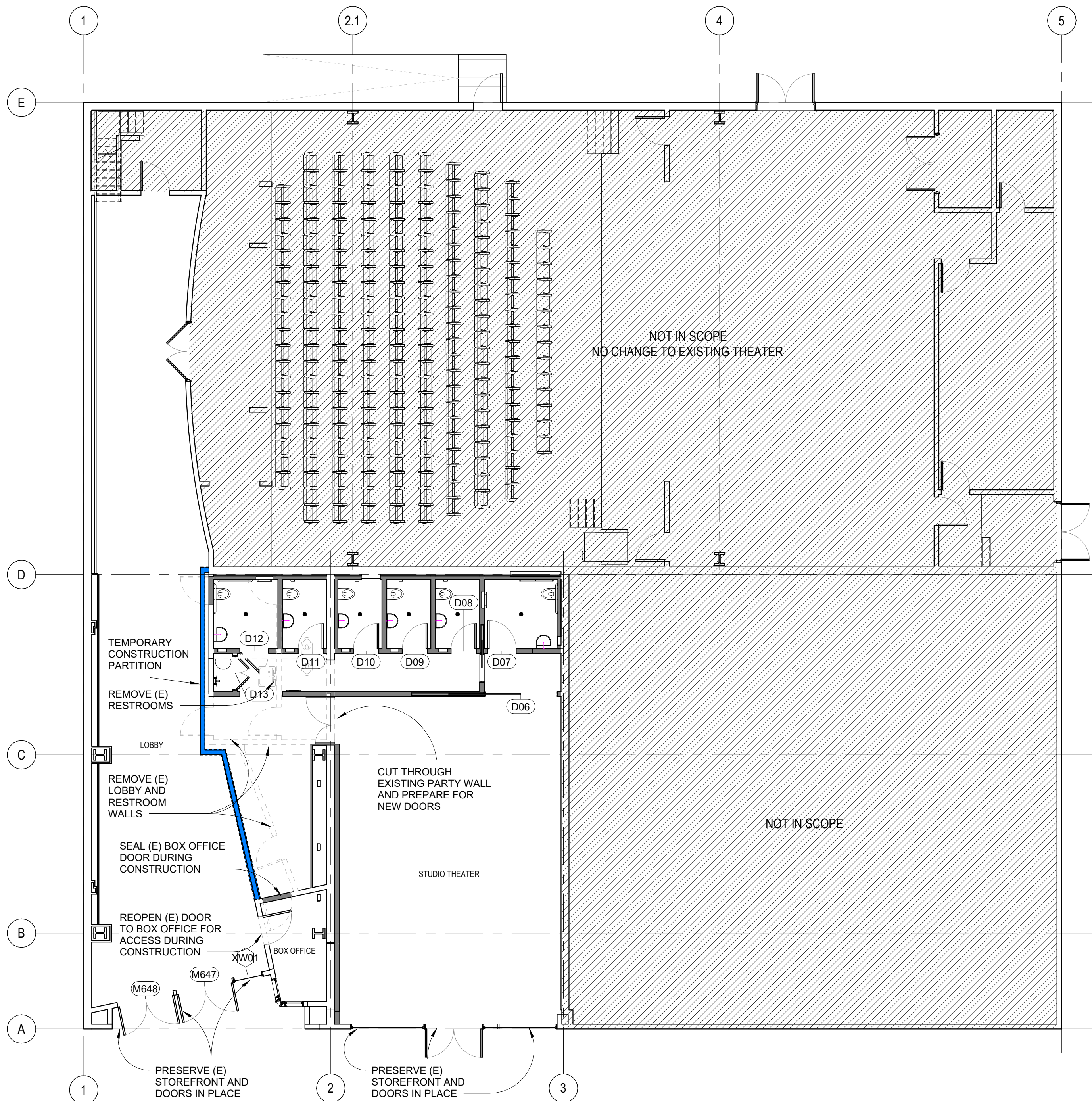
Project number 21010

No.	Description	Date	Issued by
1	PHASE 1A CITY ISSUANCE	11/13/25	

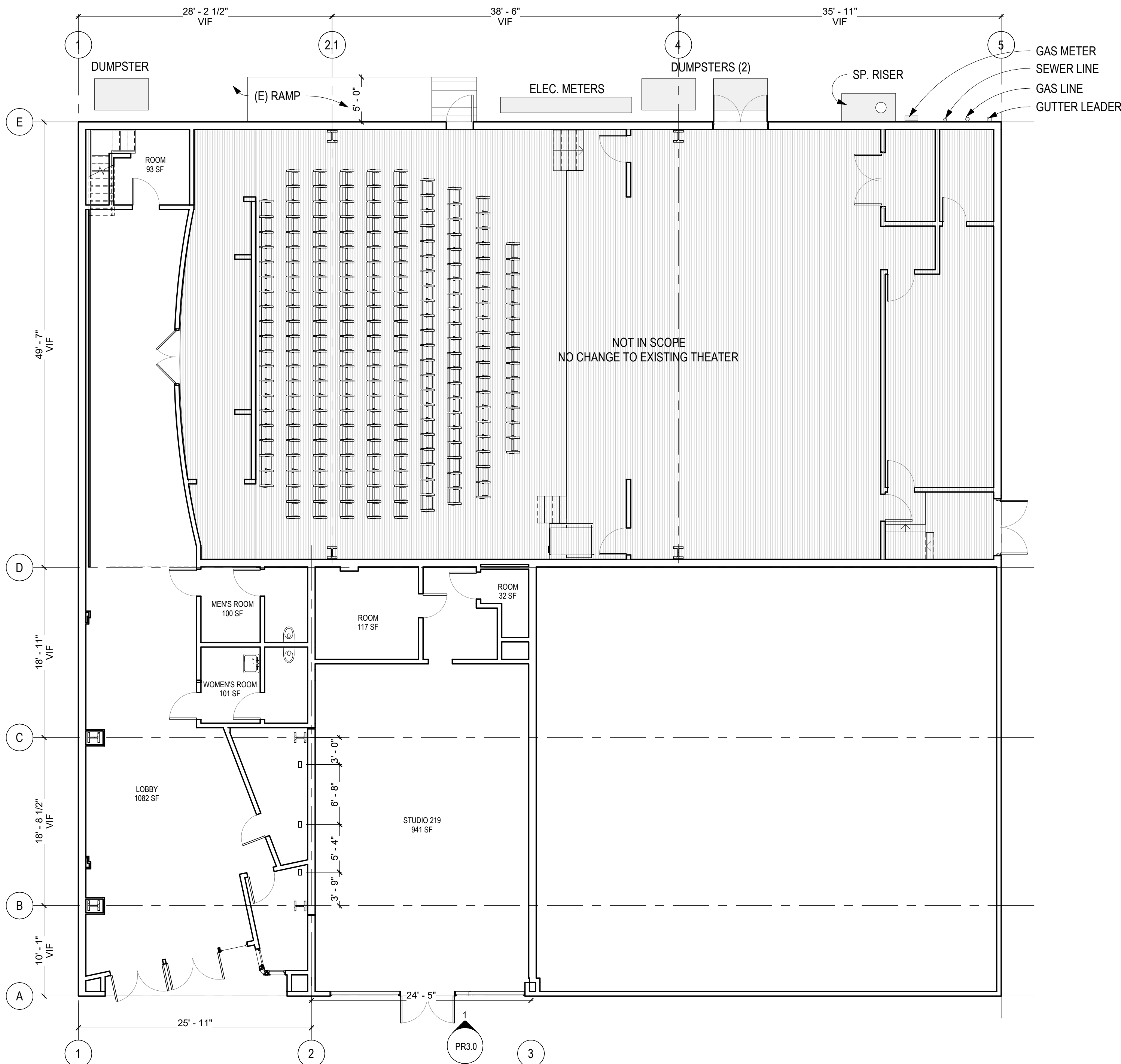


PLANS PHASE 1A

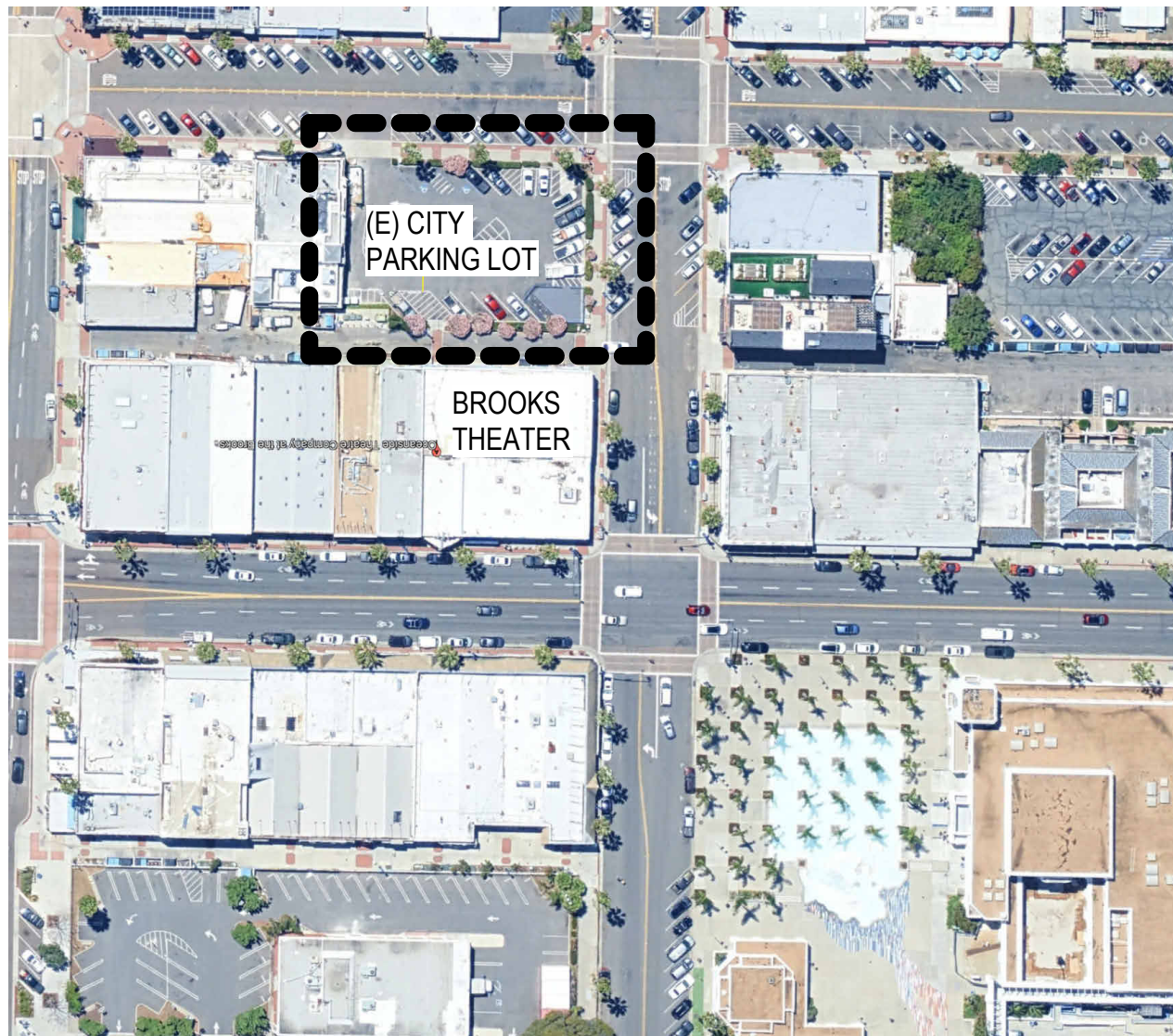
PR1.1



2 LEVEL 1 PLAN--PHASE 1A
1/8" = 1'-0"



1 LEVEL 1- EXISTING
1/8" = 1'-0"



VICINITY MAP (NTS)



ADA + 2 Restroom Trailer

The ADA + 2 Restroom Trailer is designed specifically to meet the Americans with Disabilities Act, and meets the strict California ADA standards, offering ease of access for individuals in a wheelchair or elderly end users. We recommend using this size trailer for events with 200 people or less. Great for job sites up to 30 employees.

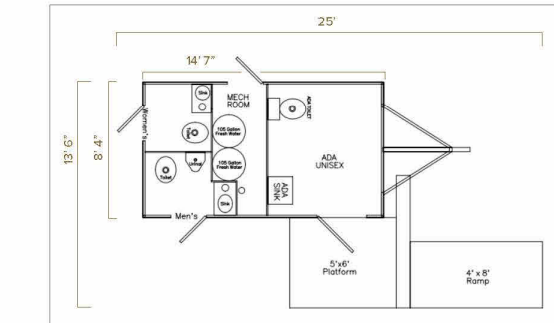
STANDARD FEATURES

- Designed to be lowered during install to shorten length of ramp
- Self-contained, easy to deploy ramp, sets up quickly
- Equipped with AC/Heating
- White china toilets with foot flush
- Interior & Exterior LED Lights
- Seamless Gel-coated Fiberglass Walls, Ceiling, and Subfloor
- Oversized Mirrors with Decorative Frames
- Stainless Steel Sinks
- Smart Touch Digital Thermostat



SPECIFICATIONS

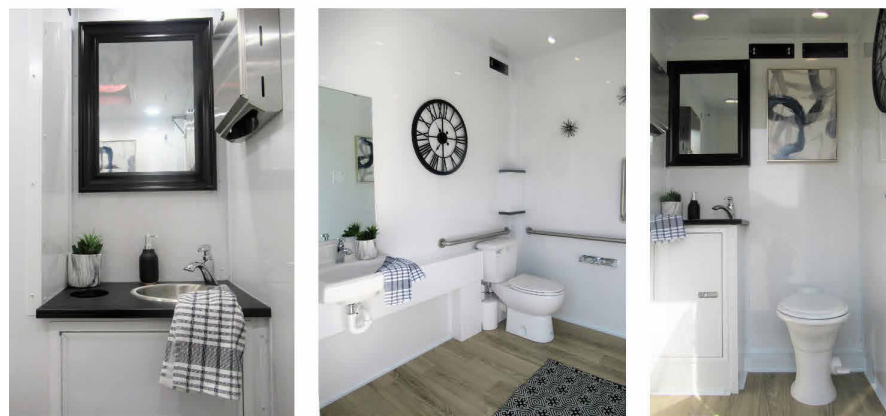
Number of Stations	Womens - 1, Mens - 1, ADA Unisex 1
Box Size	8' 4" x 14' 7"
Length w/ Ramp In Use	25'
Width w/ Ramp In Use	13' 6"
Height w/ AC	12' 6"
Fresh Water Tank	210 Gallons
Waste Tank	300 Gallons
Power Requirements	Two dedicated 100 Volt-20 amp circuit within 100' of the trailer.
No. of AC Units	1



For information on how to reserve this trailer visit theLavatory.com

California - 559.205.9983
Arizona - 602.598.1331
Utah - 801.728.4080
Hawaii - 808.736.4311

Oklahoma - 580.440.0064
Nevada - 702.707.7547
Idaho - 208.203.1575

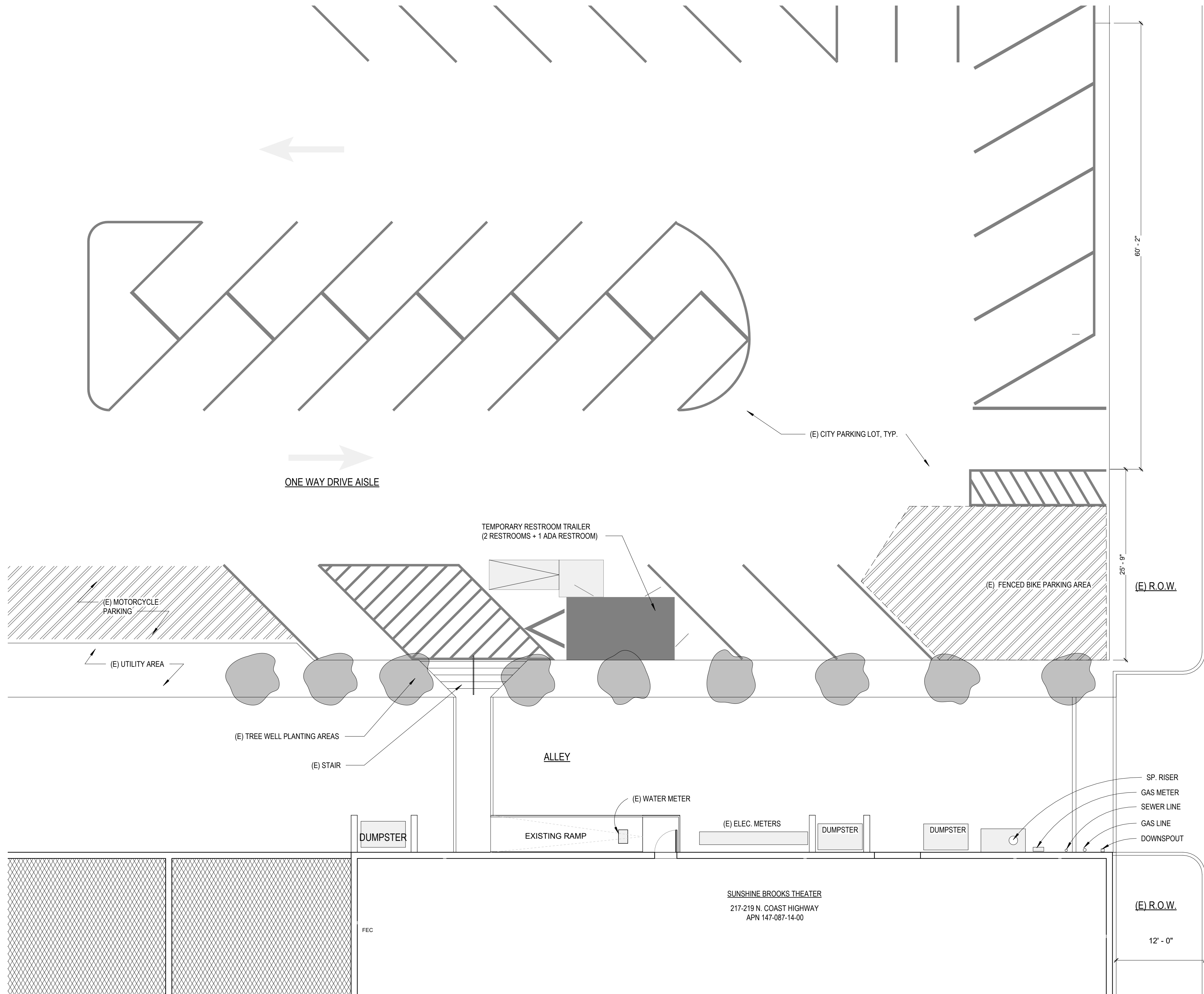


Ask about our SPECIAL RATES for weekday & long term rentals!

Restrooms | Showers | Laundry

Serving CA, AZ, UT, NV, ID, HI, OK

TEMPORARY RESTROOM TRAILER (ADA ACCESSIBLE) SPEC SHEET



1 TEMPORARY RESTROOM PROPOSAL

1/8" = 1'-0"

- ### SHEET NOTES
- REFER TO A0.01 FOR GENERAL NOTES.
 - REFER TO A0.02 FOR SYMBOL LEGEND.
 - REFER TO ENLARGED PLANS FOR DIMENSIONS.
 - PROVIDE BACKING AS NEEDED TO SUPPORT WALL HUNG ITEMS INCLUDING, BUT NOT LIMITED TO, SIGNAGE, RESTROOM ACCESSORIES, GRAB BARS, EQUIPMENT, AND FURNITURE.
 - PROVIDE NEW PORTABLE FIRE EXTINGUISHERS (PFE) AS INDICATED ON PLAN. NEW EXTINGUISHERS TO HAVE MIN. RATING OF 2-A:10-B:C. LARSEN BRAND HT11 11LB. EXTINGUISHER W/ STANDARD BRACKET 575 OR APPROVED EQUAL.
 - GC SHALL FIELD CUT MILLWORK AS NECESSARY TO ALLOW ACCESS TO WALL POWER AND SIGNAL LOCATIONS. FIELD VERIFY CONDITIONS.



OBJECT PROJECTS, LLP
4900 Shattuck Avenue, #3695
Oakland, CA 94609

Sarah Hirschman, RA (917) 916-1865
Ann Worth, RA (617) 416-8266
info@object-projects.com

OCEANSIDE THEATRE COMPANY
BROOKS THEATER RENOVATION
217-219 N. COAST HIGHWAY, OCEANSIDE, CA 92054

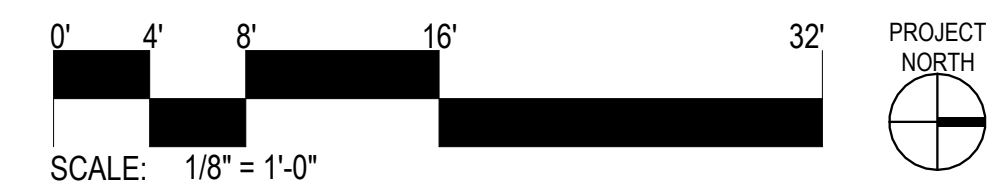
Project number 21010

No.	Description	Date	Issued by
1	PHASE 1A CITY ISSUANCE	11/13/25	



TEMPORARY
RESTROOM
LOCATIONS

PR1.2





OBJECT PROJECTS, LLP
4900 Shattuck Avenue, #3695
Oakland, CA 94609

Sarah Hirschman, RA (917) 916-1865
Ann Worth, RA (617) 416-8266
info@object-projects.com

OCEANSIDE THEATRE COMPANY
BROOKS THEATER RENOVATION
217-219 N. COAST HIGHWAY, OCEANSIDE, CA 92054

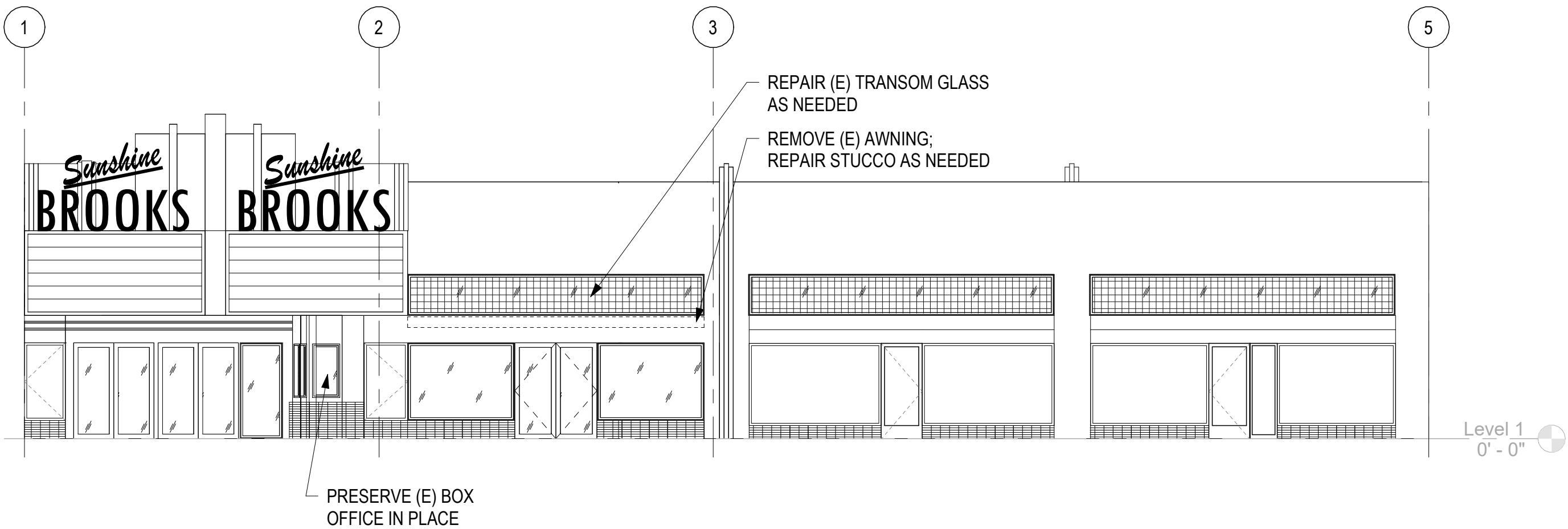
Project number 21010

No.	Description	Date	Issued by
	PHASE 1A CITY ISSUANCE	11/13/25	

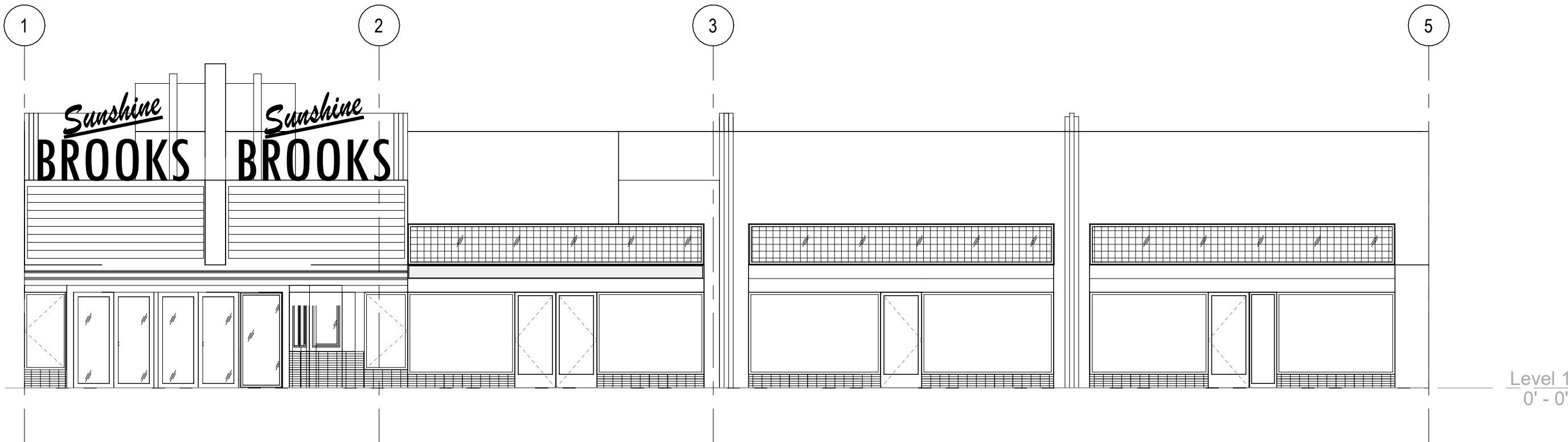


EXT. ELEVATION
PHASE 1A

PR3.0



2 EAST ELEVATION - PHASE 1A
1/8" = 1'-0"



1 EAST ELEVATION - EXISTING CONDITION
1/8" = 1'-0"